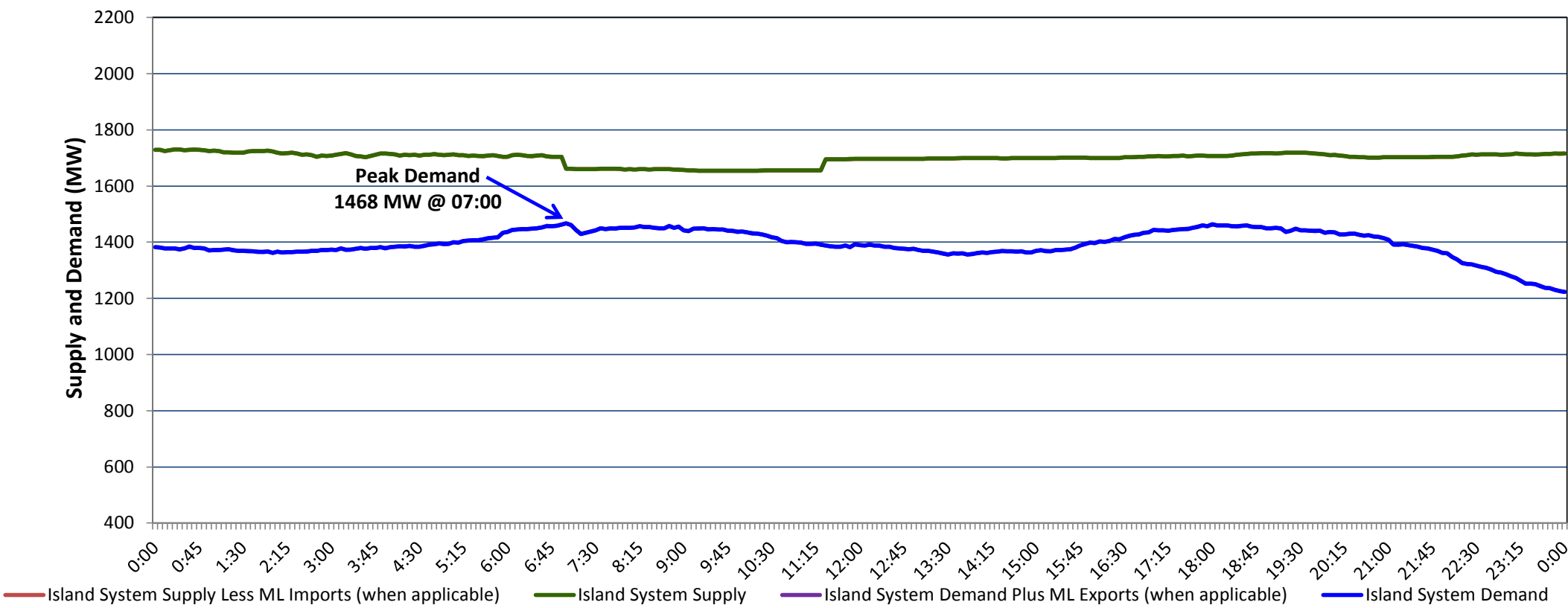


Newfoundland Labrador Hydro (NLH)  
Supply and Demand Status Report Filed Monday, February 19, 2018

Section 1  
Island Interconnected System Supply, Demand & Exports  
Actual 24 Hour System Performance For Sunday, February 18, 2018



Supply Notes For February 18, 2018

- A As of 2115 hours, January 04, 2018, Stephenville Gas Turbine available at 25 MW (50 MW).
- B As of 1204 hours, February 03, 2018, Holyrood Unit 1 unavailable 70 MW (170 MW).
- C As of 0844 hours, February 17, 2018, Holyrood Unit 2 available at 110 MW (170 MW).
- D As of 0844 hours, February 17, 2018, Holyrood Unit 3 available at 105 MW (150 MW).
- E At 0656 hours, February 18, 2018, Granite Canal Unit unavailable (40 MW).
- F At 1123 hours, February 18, 2018, Granite Canal Unit available (40 MW).

1,2

Section 2  
Island Interconnected Supply and Demand

Mon, Feb 19, 2018		Island System Outlook <sup>3</sup>		Seven-Day Forecast		Temperature (°C)		Island System Daily Peak Demand (MW)	
						Morning	Evening	Forecast	Adjusted <sup>7</sup>
Available Island System Supply: <sup>5</sup>		1,715	MW	Monday, February 19, 2018		-6	-6	1,495	1,327
NLH Generation: <sup>4</sup>		1,395	MW	Tuesday, February 20, 2018		-3	-3	1,445	1,337
NLH Power Purchases: <sup>6</sup>		110	MW	Wednesday, February 21, 2018		-7	-1	1,515	1,372
Maritime Link Imports:		-	MW	Thursday, February 22, 2018		2	-8	1,590	1,480
Other Island Generation:		210	MW	Friday, February 23, 2018		-11	-8	1,650	1,431
Current St. John's Temperature & Windchill:		-7 °C	-14 °C	Saturday, February 24, 2018		-7	-4	1,400	1,293
7-Day Island Peak Demand Forecast:		1,650	MW	Sunday, February 25, 2018		-5	-4	1,385	1,278

Supply Notes For February 19, 2018

- Notes:
- Generation outages for running and corrective maintenance are included. These are not unusual for power system operations. They generally do not impact customer supply. The power system operators schedule outages to system equipment whenever possible to coincide with periods when customer demands are low and sufficient supply reserves are available. However, from time to time equipment outages are necessary and reserves may be impacted.
  - Due to the Island System having no synchronous connections to the larger North American grid, when there is a sudden loss of large generating units some customer's load must be interrupted for short periods to bring generation output equal to customer demand. This automatic action of power system protection, referred to as under frequency load shedding, is necessary to ensure the integrity and reliability of system equipment. Under frequency events typically occur 5 to 8 times per year on the Island Interconnected System and the resultant customer load interruptions are generally less than 30 minutes.
  - As of 0800 Hours.
  - Gross output including station service at Holyrood (24.5 MW) and improved NLH hydraulic output due to water levels (35 MW).
  - Gross output from all Island sources (including Note 4).
  - NLH Power Purchases include: CBPP Co-Gen, Nalcor Exploits, Rattle Brook, Star Lake, Wind Generation, Vale capacity assistance (when applicable).
  - Adjusted for CBP&P, Vale and Praxair interruptible load, Maritime Link Exports and the impact of voltage reduction (when applicable).

Section 3  
Island Peak Demand Information  
Previous Day Actual Peak and Current Day Forecast Peak

Sun, Feb 18, 2018	Actual Island Peak Demand <sup>8</sup>	07:00	1,468 MW
Mon, Feb 19, 2018	Forecast Island Peak Demand		1,495 MW

- Notes:
- Island Demand / ML Exports (where applicable) is supplied by NLH generation and purchases, plus generation owned and operated by Newfoundland Power and Corner Brook Pulp & Paper (Deer Lake Power, DLP).